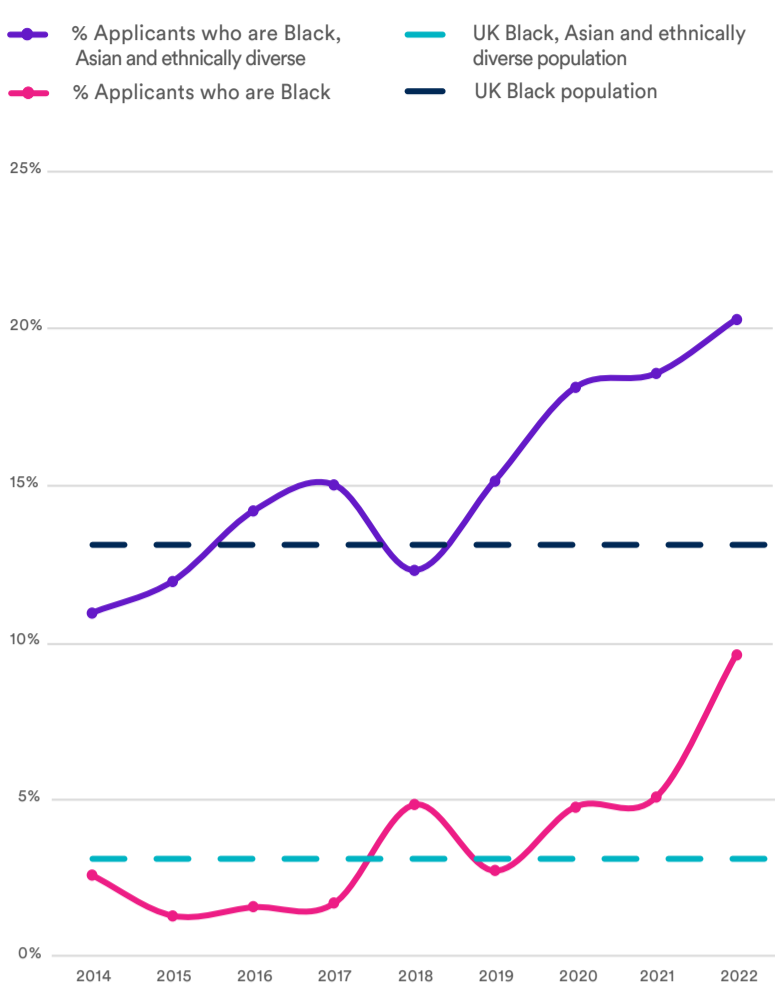


Black History Month 2022: Our Data

Applicants (2014 - 2022)

% Black applicants over time



Programmes (2022)

% Black applicants by programme

Programme	% Black applicants	% Black, Asian and ethnically diverse applicants
All programmes	10%	20%
BMC Future Views	0%	14%
BMC Digital Residency	100%	100%
Composer-Curator 2022	7%	18%
Digital Bridge	7%	37%
George Butterworth Awards	7%	15%
LGBTQ+ Composers Editorial	17%	17%
LGBTQ+ Composers Open Call	6%	6%
New Voices 2022	6%	16%

Age (average)

Average age of Black composers

Applicants



Selected



Location (London)

% Black applicants based in London

Applicants



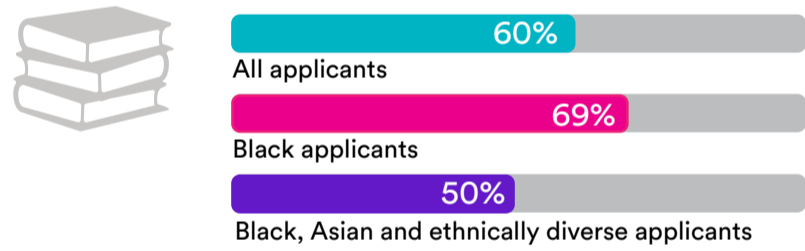
Selected



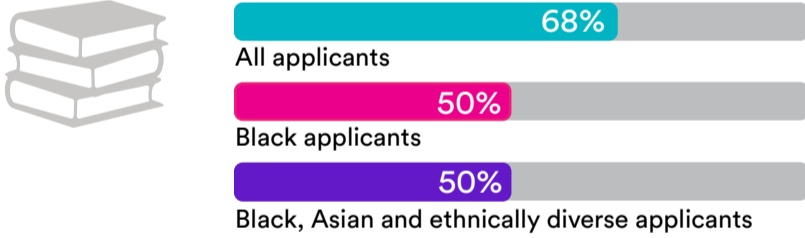
Education

% Black applicants who attended state school

Applicants



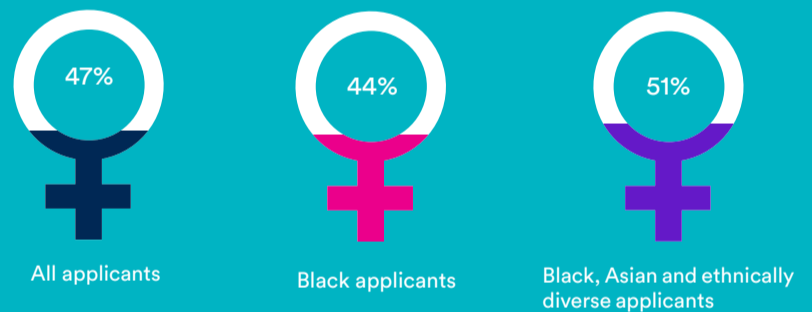
Selected



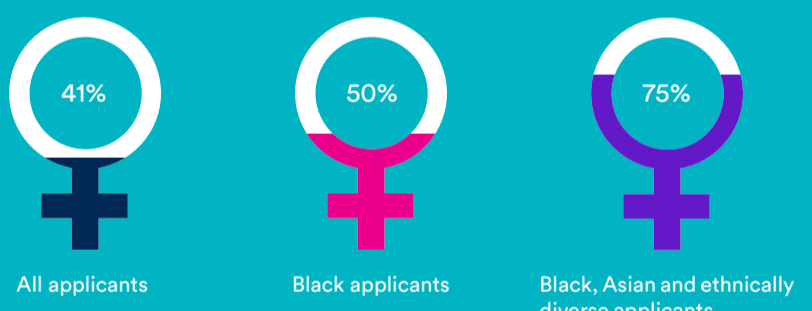
Gender (Women)

% Black women applicants to our programmes

Applicants

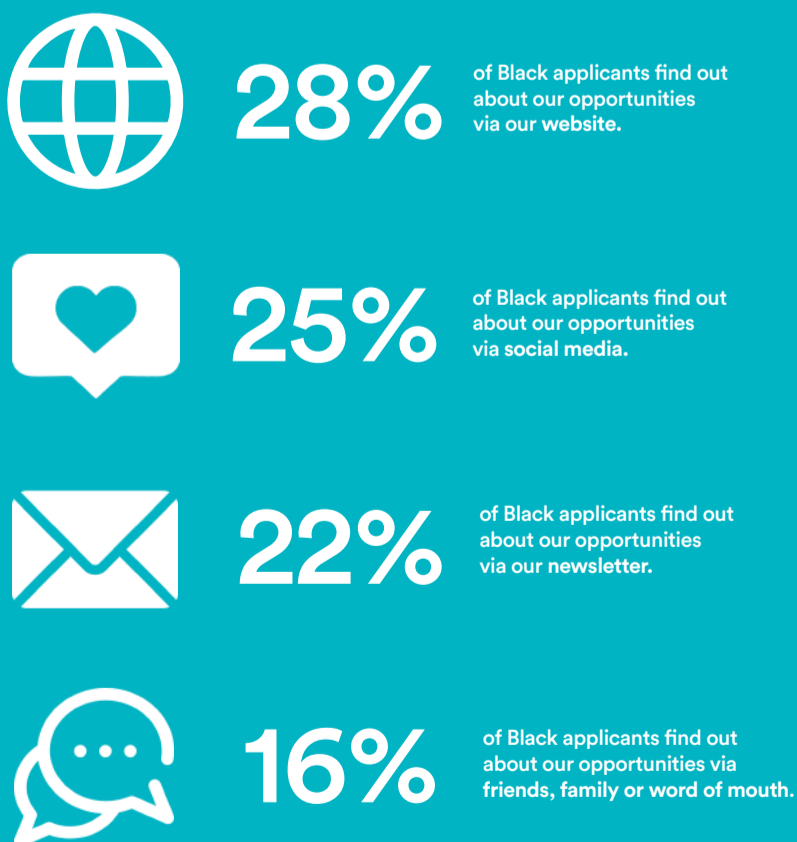


Selected



How people find us

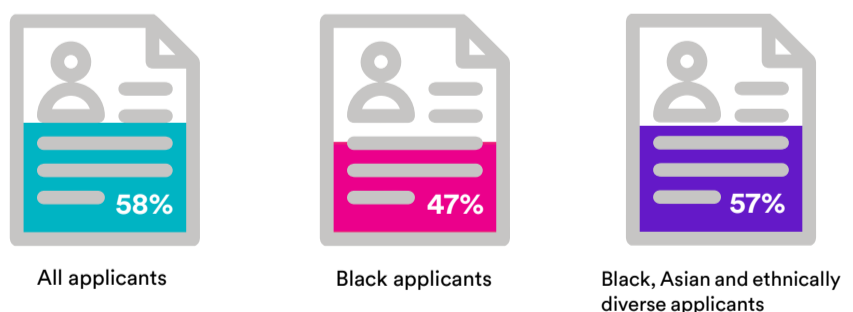
Where Black applicants find out about us



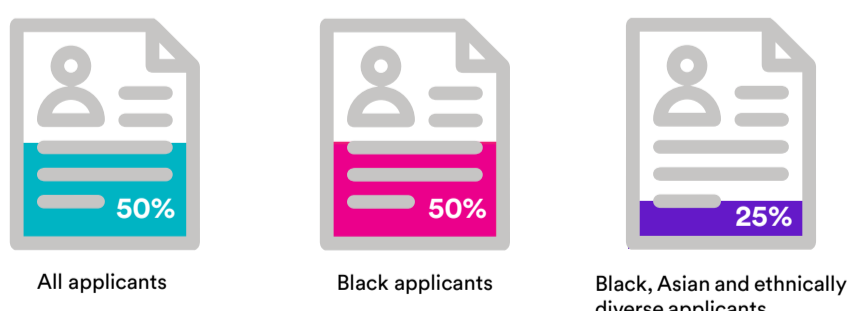
First time applicants

% Black composers applying for the first time

Applicants



Selected



#BlackHistoryMonth #TimeforChange #ActionNotWords

soundandmusic.org

All figures are as of October 2022 unless otherwise stated
*BMC - British Music Collection
Some icons from www.flaticon.com
Licensed by Creative Commons BY 3.0